



Future of decision support

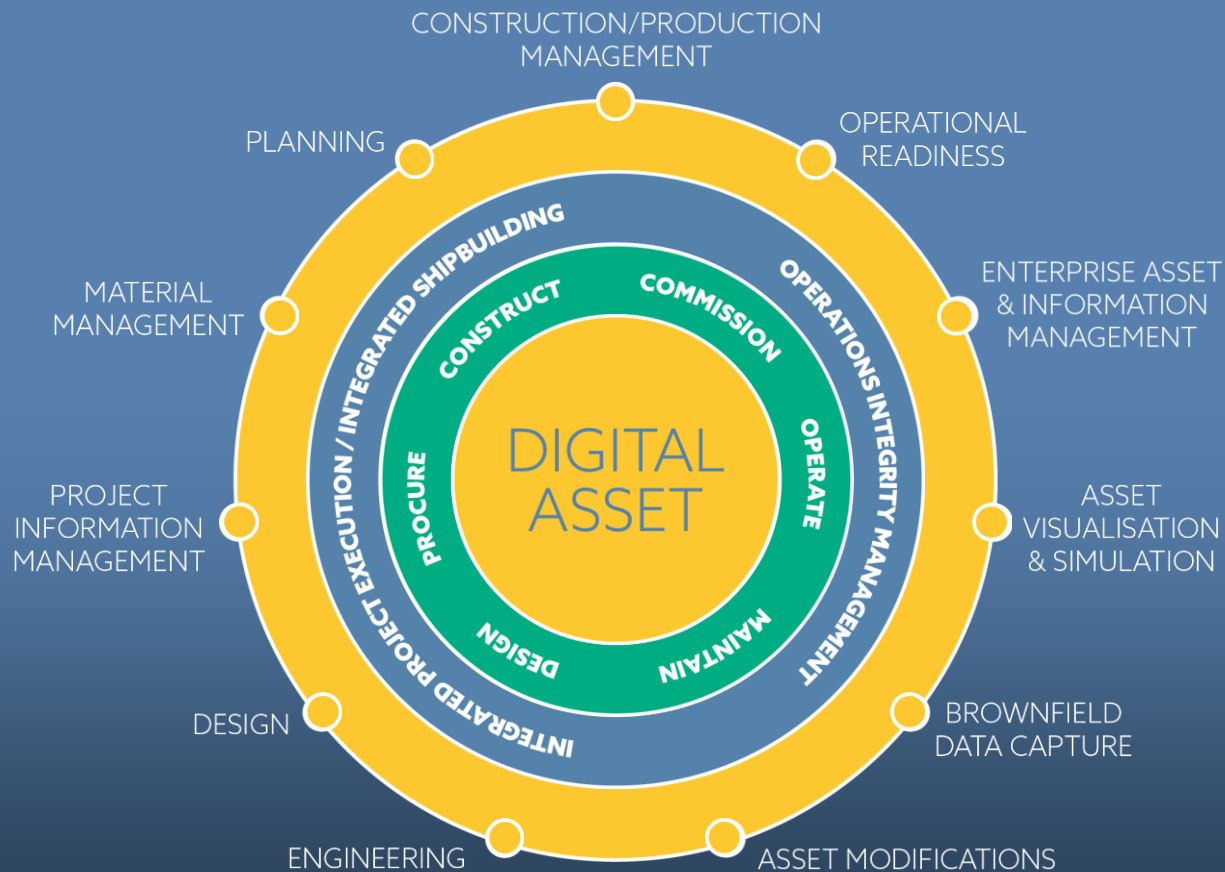
Harald Gunnerød
Senior Account Manager



This presentation may include predictions, estimates, intentions, beliefs and other statements that are or may be construed as being forward-looking. While these forward-looking statements represent our current judgment on what the future holds, they are subject to risks and uncertainties that could result in actual outcomes differing materially from those projected in these statements. No statement contained herein constitutes a commitment by AVEVA to perform any particular action or to deliver any particular product or product features. Readers are cautioned not to place undue reliance on these forward-looking statements, which reflect our opinions only as of the date of this presentation. The Company shall not be obliged to disclose any revision to these forward-looking statements to reflect events or circumstances occurring after the date on which they are made or to reflect the occurrence of future events.

Agenda for today

- Business challenges and drivers
- New tools to increase efficiency and decision support during engineering
- The ultimate tool for decision support during operation: AVEVA Engage



«Our industry has failed.....»

EVP ExxonMobile, 2014, on cost and productivity

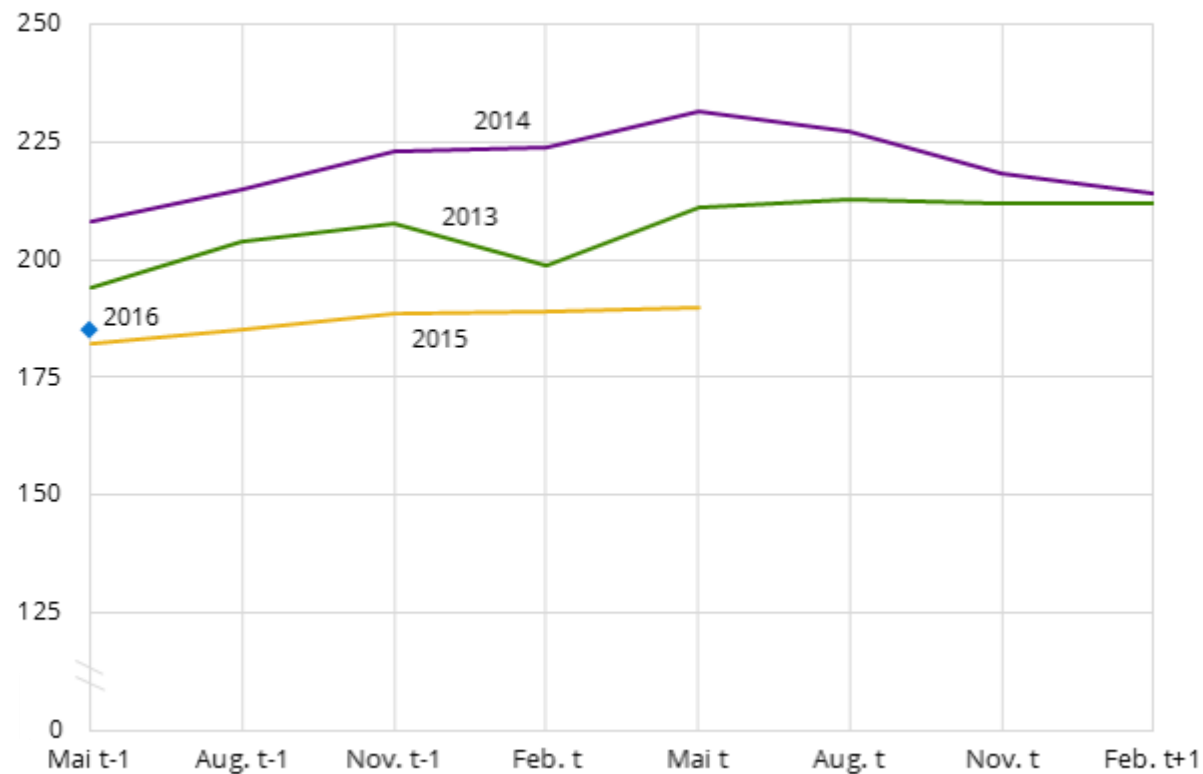
- Due to pressure on capacity and ability to deliver efficiency has suffered and cost has increased
- Development cost has grown but production remains flat, thus reducing profitability
- The decrease in oil price is making everything worse



Illustration: Aftenposten

Figur 1. Investeringer. Oljevirksomhet. Årsanslag gitt på ulike tidspunkt

Milliarder kroner



Kilde: Statistisk sentralbyrå.

Do you need to change?

- Do nothing,
it will pass
- Cut costs everywhere
and await better days
- **Adjust cost and
improve efficiency**

Where can AVEVA help the industry

- Efficient creation of the optimal design with correct and consistent Lifecycle Information
- Help the organization make the right decisions during engineering and operation
 - Collect and connect information
 - Make sure the information is correct and consistent
 - Present “big data” in an intuitive and understandable way

AVEVA Technology examples

PIPING IED | OILGAS | Model - AVEVA Everything3D

PROJECT HOME VIEW TOOLS MANAGE DESIGN AIDS GENERAL EQUIPMENT PIPING ADMIN

Current View Graphics Auto-Colour Colour Solid Copy New Copy Image Save Restore Zoom Lock Copy Image Centre View Limits Grid Plane Views

Settings Edges Views

Add CE Hide Tooltips

Content

World Current Element 3 Points Local Coordinate System

Create Clip Add Within

Modify Cap

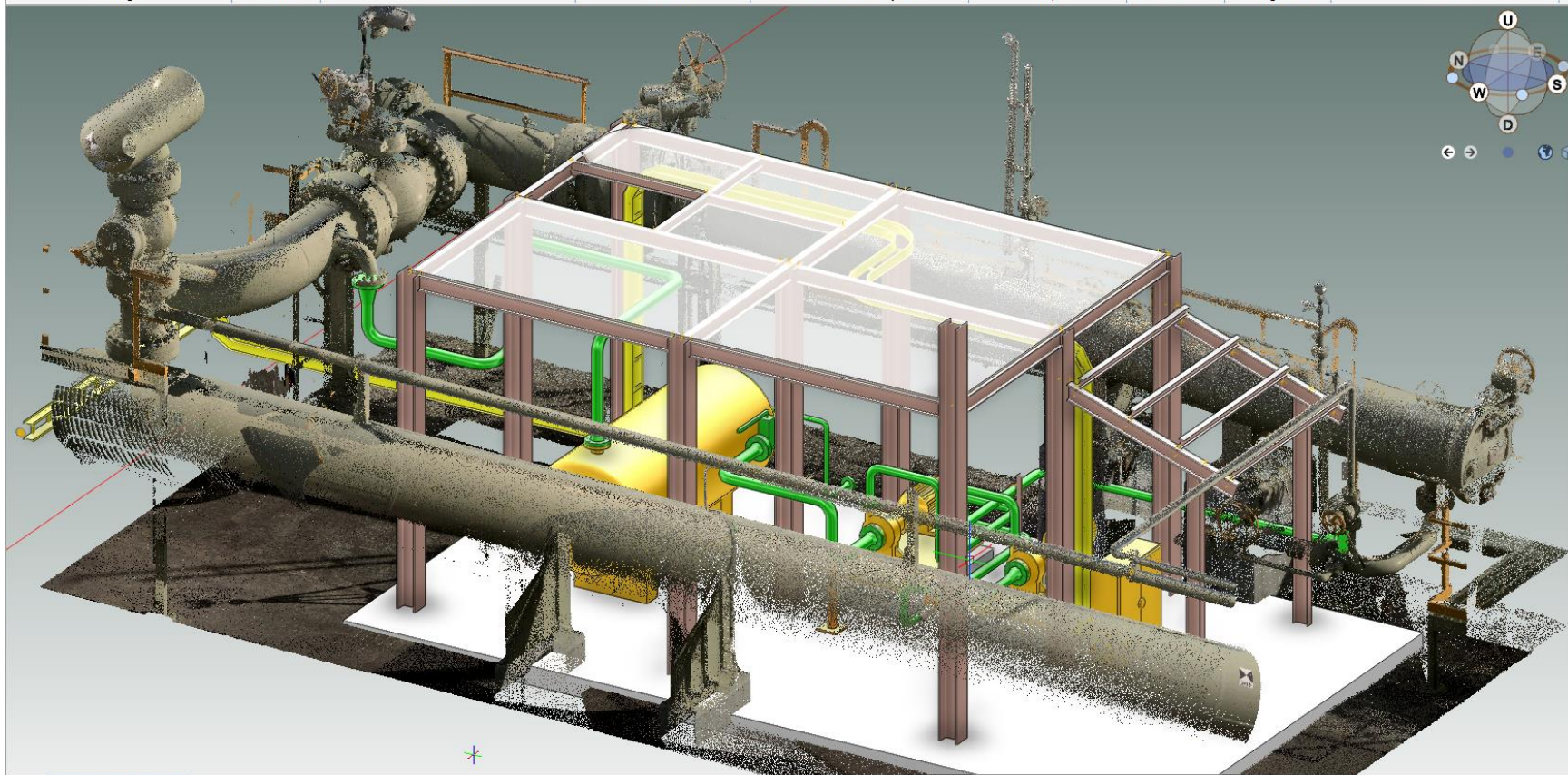
Annotate Dimension

Annotations Aids

Display Low Density Mask

Bubble Detail

Highlight Laser

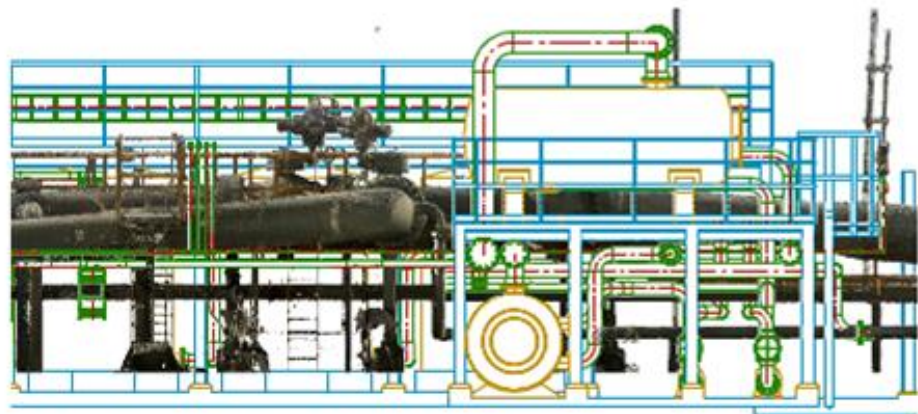
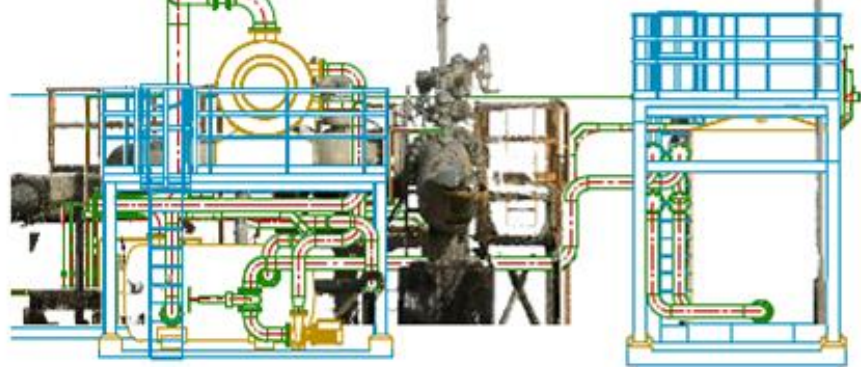
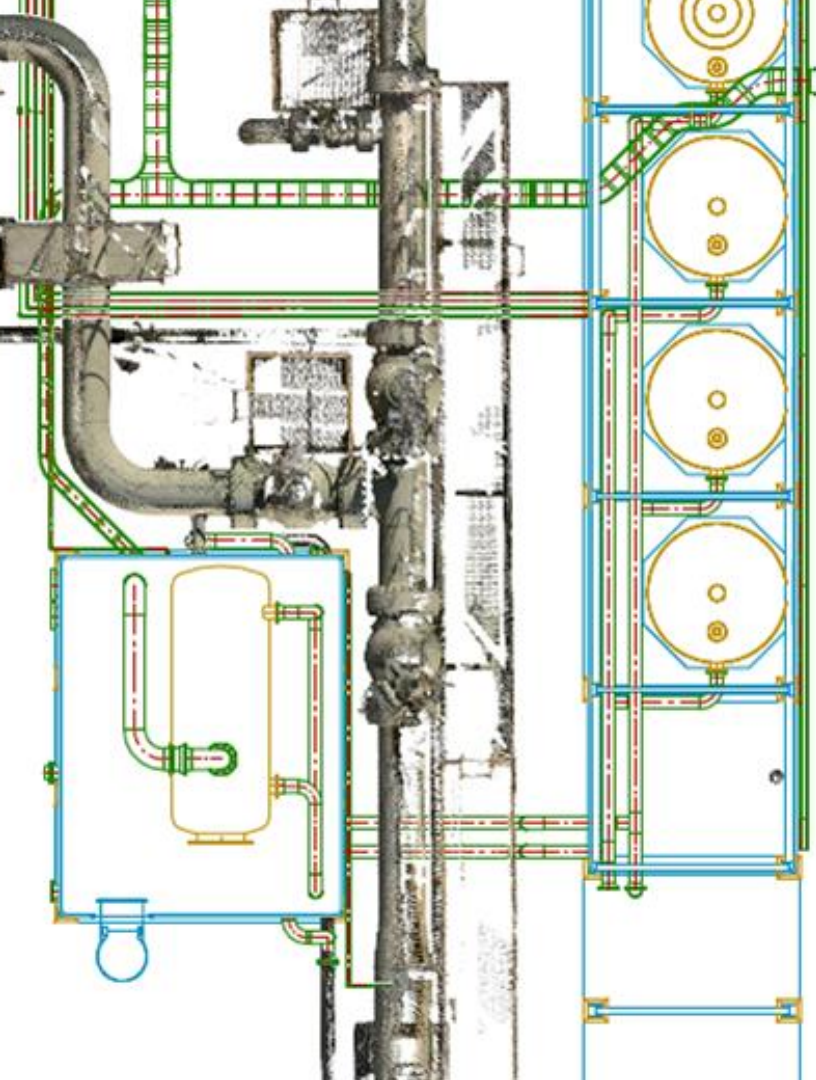


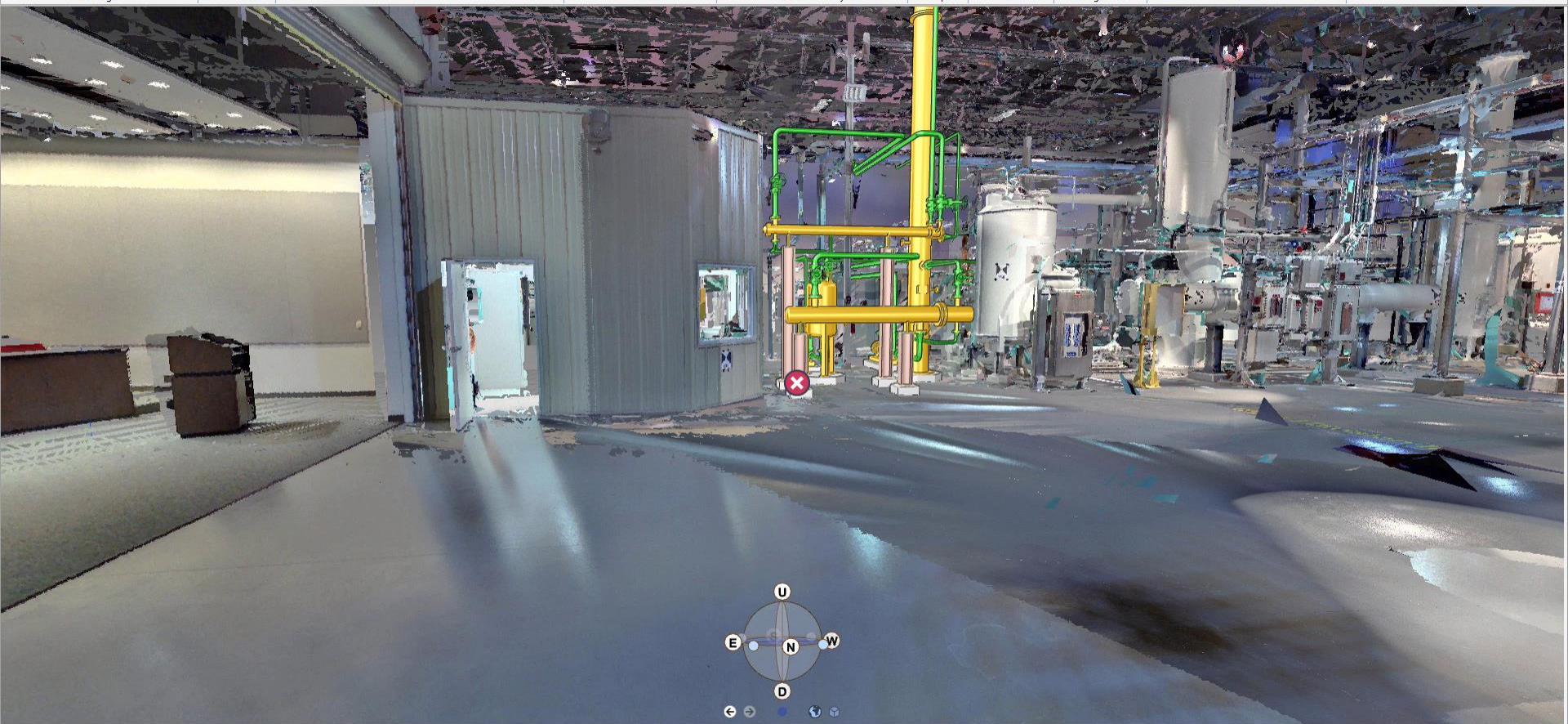
3D View(1) - Drawlist(1)

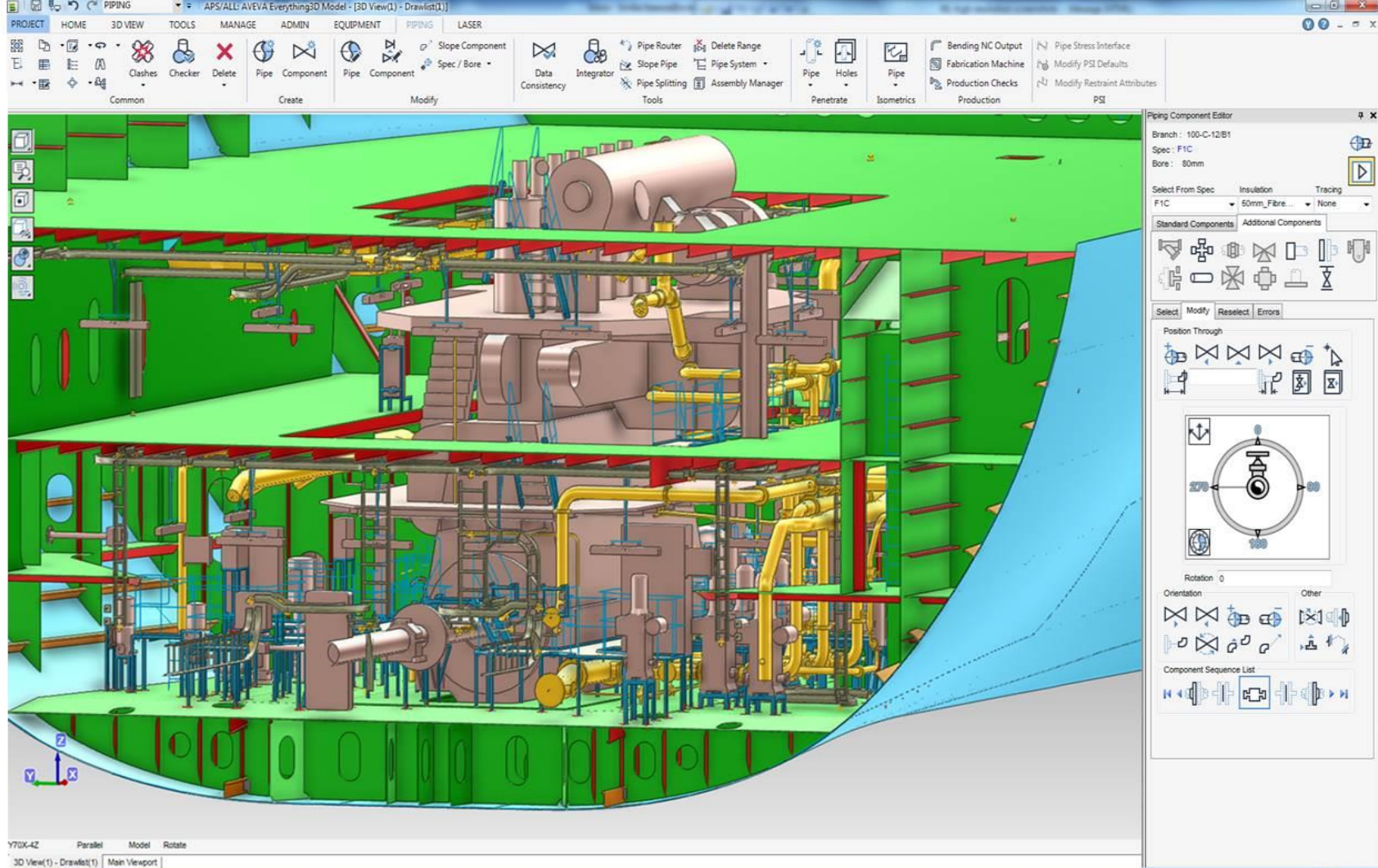
Windows taskbar showing various application icons and system tray icons.

13:51

Copyright © 2013 AVEVA Limited. All rights reserved.

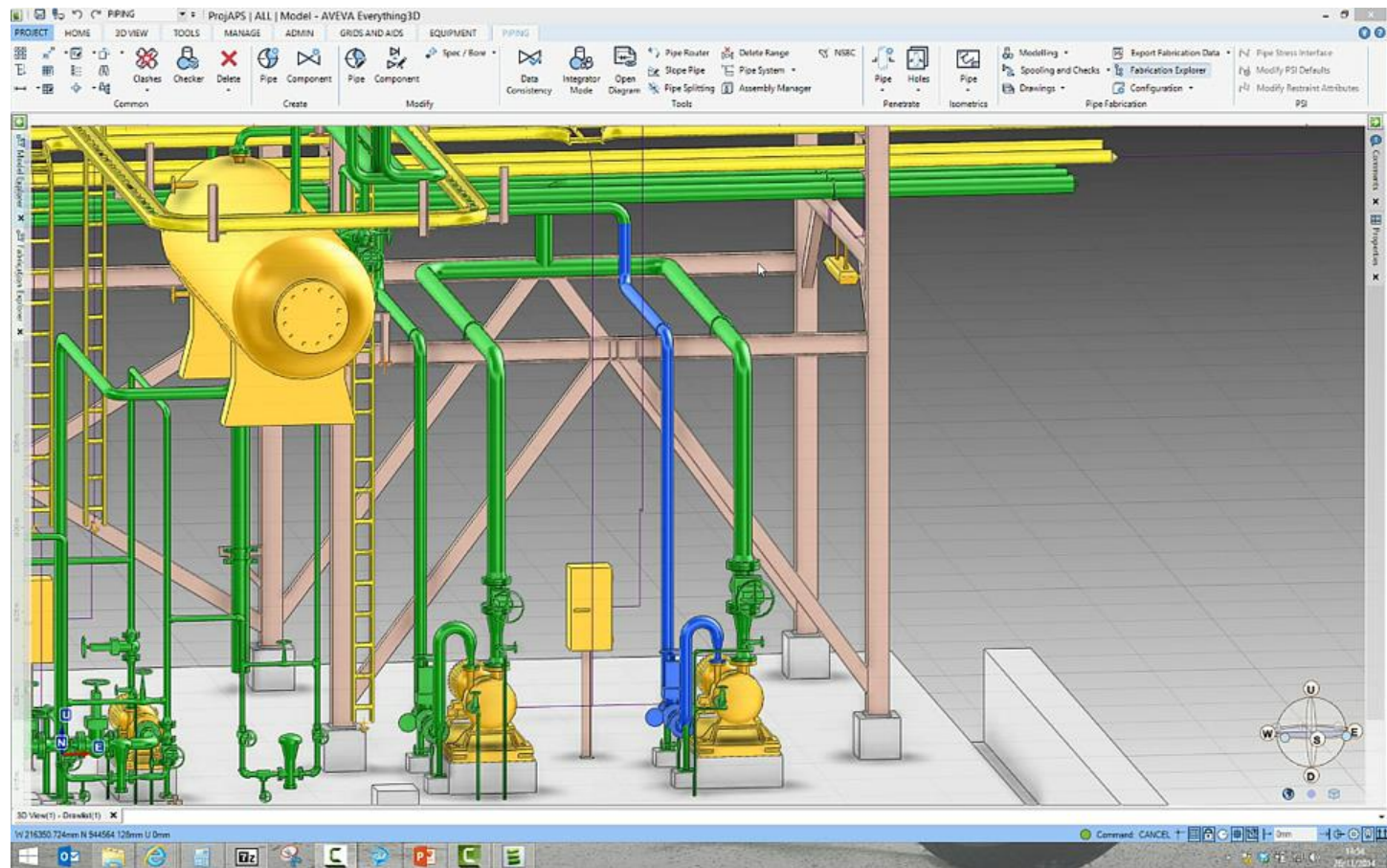






Quickly create consistent LCI information

- Making sure information created within different disciplines remain consistent
- Allow for concurrent engineering
- Prepare high quality information for LCI
- Monitor status and compliance



Comment

SCTN PS-03-00224-BAR-1

Type	SCTN
Specification	100x100x12.0
Jusl/Meml/Jlin	NA/NA/NA
Material	Carbon Steel
Generic Type	ANG
Cut Length	474mm
Elevation	104865.75mm

Comment Threads

SCTN

PS-03-00224-BAR-1

Please check the size



The size does not appear to match

Priority

Urgent



AVEVA Engage

Power with simplicity:
your Digital Asset, realised



Model



Reset View



Section

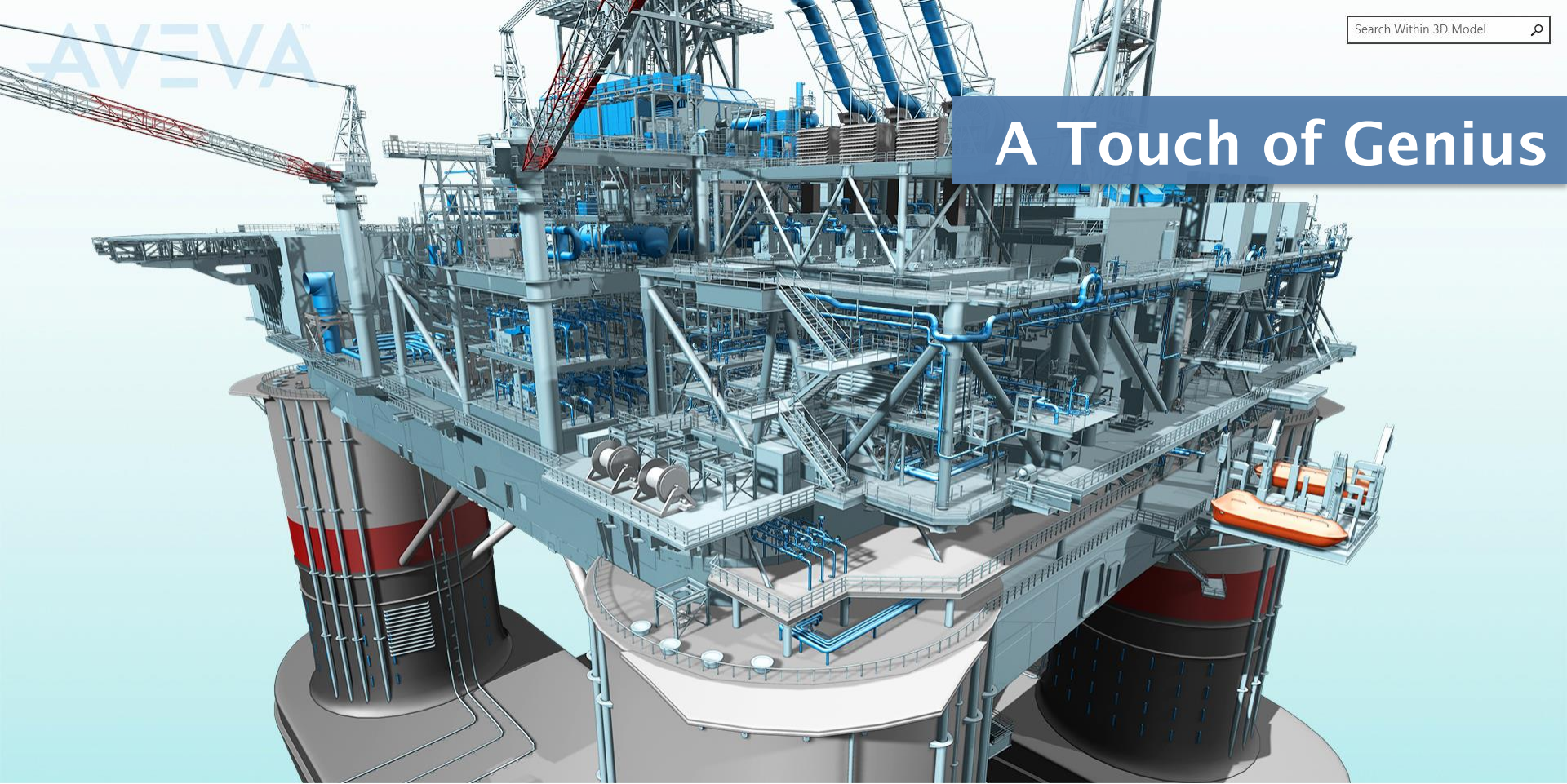


Collect



Collection

A Touch of Genius



Information Retrieval

P-1053

Equipment

2 Documents



Model



Reset View



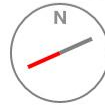
Section



Collect



Collection



Perspective

P-1056

Equipment



ALL CLASSES OF DOCUMENT 2

P-1056-080-LDS-002

02C

P-1056-090-OGS-005

0

P-1056 Data Set

Description Centrifugal Pump
Vendor Weir
PO Number 10075
Responsible Engineer J Jones
TagID P-1056



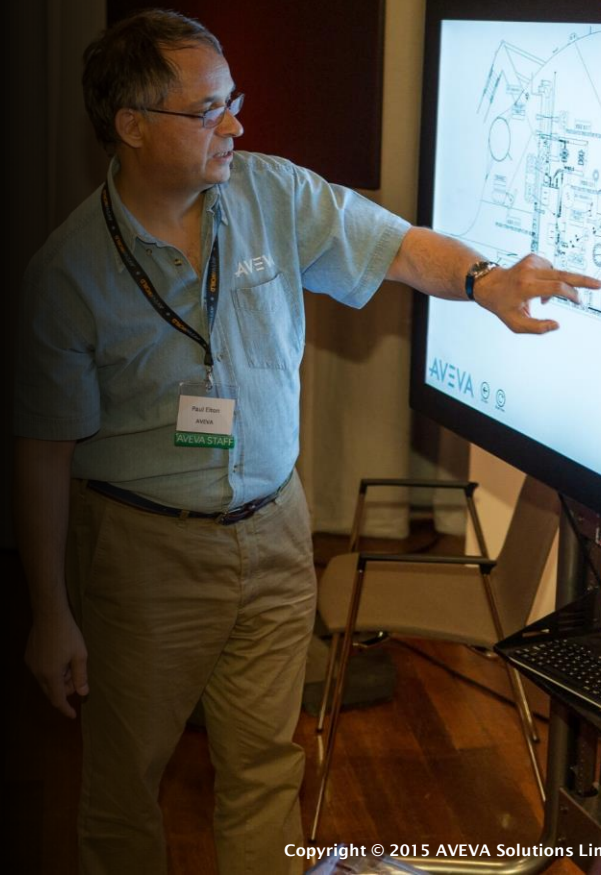
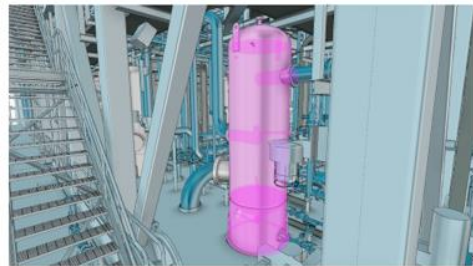
2 Documents

Intuition



MBF-908 Pressure Vessel (Ambient Temperature)

VRUA 2ND STAGE SUCTION SCRUBBER





Search Within 3D Model



Model



Reset View



Section



Measure

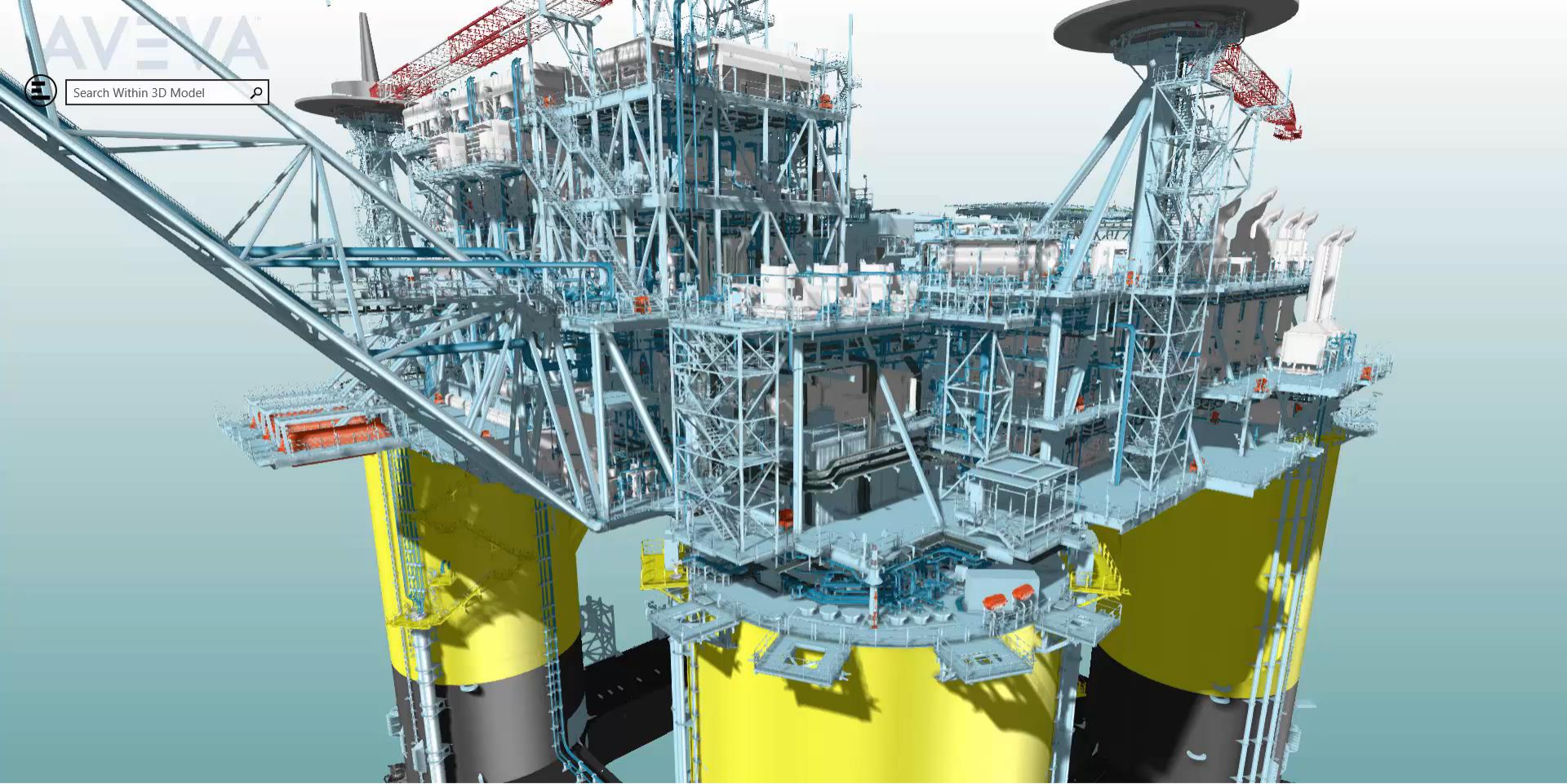


Collect



Collection





Search Within 3D Model



Model



Reset View



Section



Measure



Collect



Collection



Future Potential

Unlocking even greater power

www.aveva.com/futureofdecisionsupport



Model



Reset View



Section



Collect



Collection



DEMO



Thank you

www.aveva.com/futureofdecisionsupport



www.aveva.com